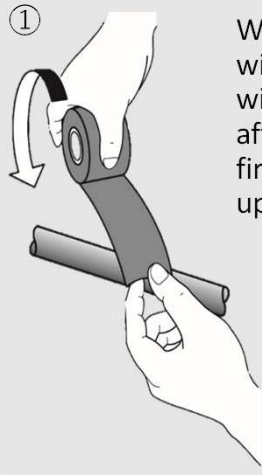


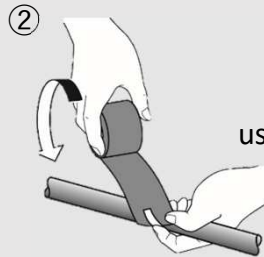
# PROTECO™ TAPE

## Installation Procedure

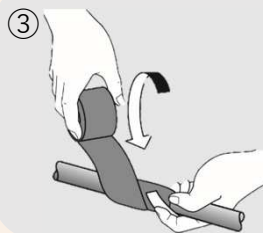
### At the beginning



① Wrap around the cable with the tape in half width overlapping, and after completing the first layer, apply the upper layer.

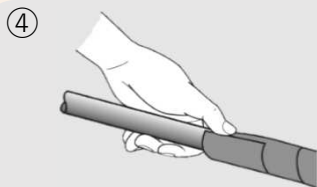


② To make your work easier, it is recommend to stabilize the tape by using a plastic tape at the beginning of the wrapping point.

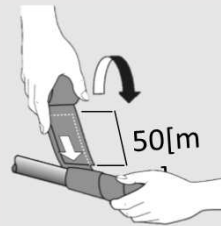


③ Pull the tape until the width of the tape is reduce by around **2~3mm** and wrap it around the cable.

\*Make sure that there is no interspace between the tape and the overlapped tape.

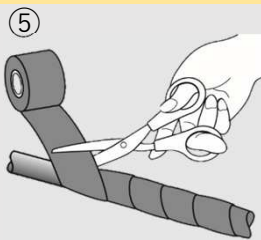


④ When the roll of the tape is used up before finishing the wrapping, just continue to wrap around with a new tape.

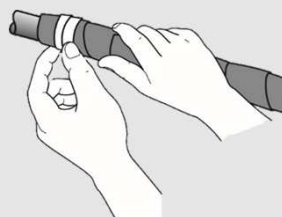


The new tape must be overlapped by **50mm** under the already used tape.

### Turning back point



⑤ Cut the tape. It is recommended to stabilize the wrapped tape by applying a plastic tape.



Overlap the tape for **2 to 3 times** perpendicularly. And change the tape direction to backward.



⑥ Repeat the same wrapping as the first layer up to the starting point.



### At the end



⑦ Overlap the tape for **2 to 3 times** perpendicularly. And stabilize the tape by applying the plastic tape.

