

用于植入类医疗器械 镍钛丝 F-ELI

Furukawa Techno Material
2E-GS-1504-1

New!

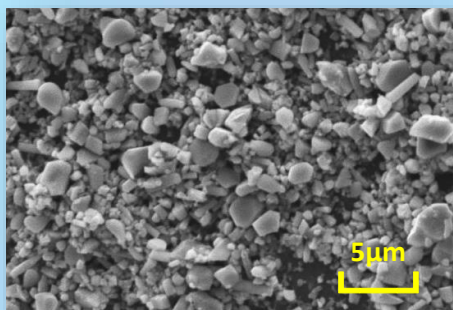
F-ELI

Furukawa Extra Low Inclusion wire

保证杂质 (Inclusion) 长度 $\leq 15 \mu\text{m}$, 面积比 $\leq 0.5\%$!
(仅ASTM F2063-12规定数值的一半 !!)

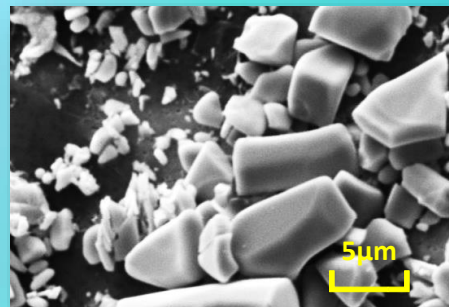
- ✓ 优异耐久性, 确保超长寿命
- ✓ 自家熔铸, 确保原料百分百追溯性

F-ELI



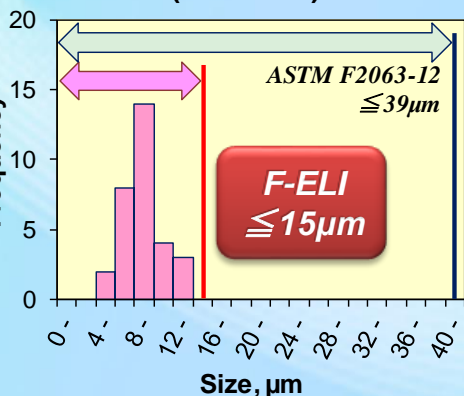
杂质实际分布

Company A

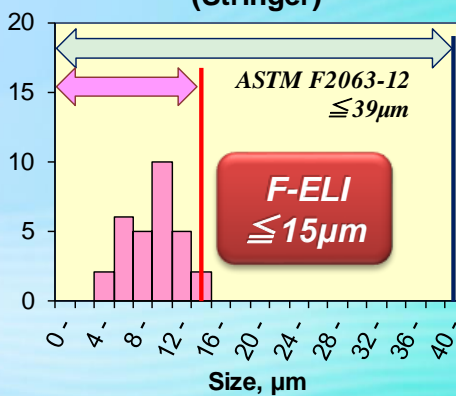


※运用ASTM F2063-12规定的测试方法(热加工后)

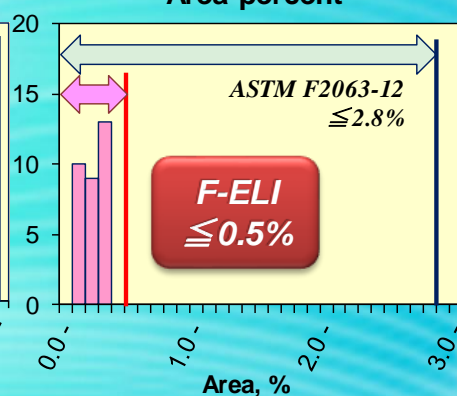
Max. inclusion
(Individual)



Max. inclusions and voids
(Stringer)



Area percent



型号	成分比 (mass%)	锭块Af点 ℃ (° F)	对应丝径	表面
NT-N-FELI	56.0 Ni-Ti	-10~12 (14~53)	0.002"~0.040" (0.05~1.00 mm)	Thin oxide or Pickled
NT-E4-FELI	55.9 Ni-Ti	5~28 (41~82)		

