

F-ELI wire for medical devices

New!

F-ELI

Furukawa Techno Material
2E-GS-1504-1

Furukawa Extra Low Inclusion wire

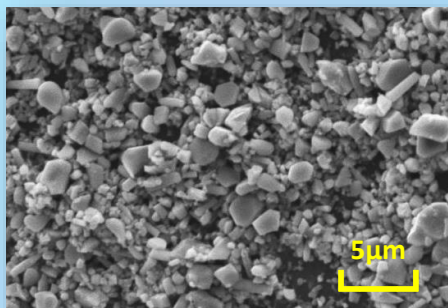
Size $\leq 15\mu\text{m}$ Area% $\leq 0.5\%$ GUARANTEED !

1/2 of ASTM F2063-12 requirement !!

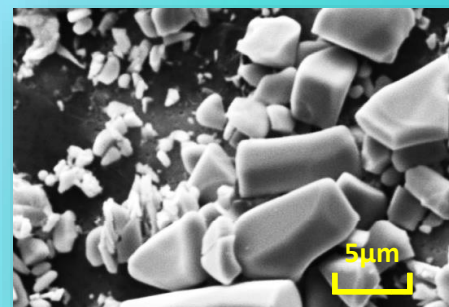
Superior Fatigue Life !!!

Full Range Traceability (In-House Melting)

F-ELI



Company A



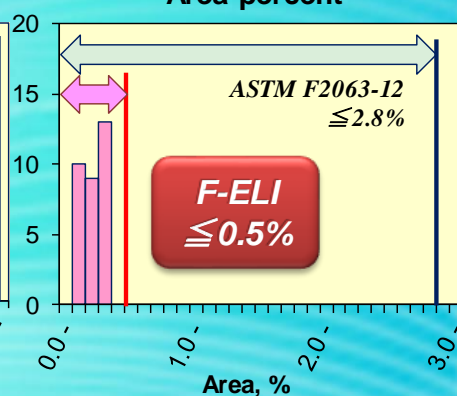
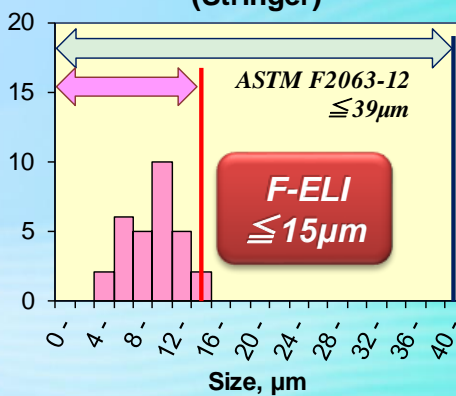
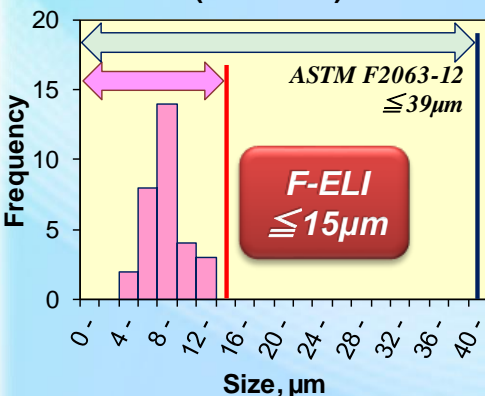
Actual Inclusion Distribution

Inspection comply with ASTM F2063-12
(inspected at hot-worked condition)

Max. inclusion
(Individual)

Max. inclusions and voids
(Stringer)

Area percent



Alloy type	Nominal Composition (mass%)	Ingot Af °C (° F)	Wire Dia.	Surface
NT-N-FELI	56.0 Ni-Ti	-10~12 (14~53)	0.002"~0.040"	Thin oxide
NT-E4-FELI	55.9 Ni-Ti	5~28 (41~82)	(0.05~1.00 mm)	or Pickled

